



META-ASSESSMENT FRAMEWORK: EVALUATING ACADEMIC ASSESSMENT PROCESSES

PRESENTED BY DANIA SALEM

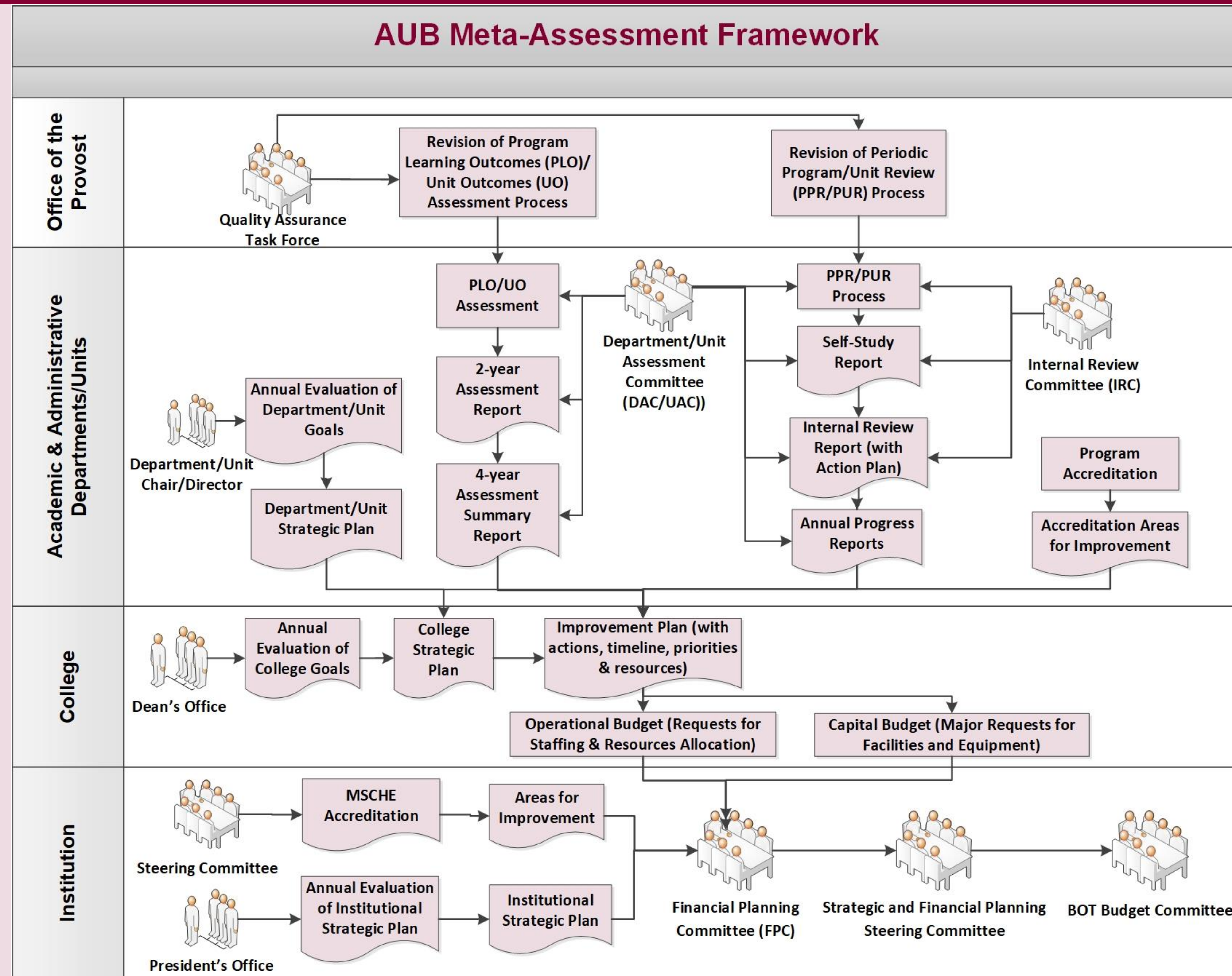
International Conference on Assessing Quality in Higher Education - Berlin June 2024

Introduction

- In most higher education institutions, **META-ASSESSMENT** is conducted to improve the **quality** and **effectiveness** of different assessment processes.
- By critically examining assessment methods and processes, educators can identify areas for improvement, make necessary adjustments, and ultimately enhance their students' learning experience.

Methodology for Meta-Assessment

- META-ASSESSMENT CHECKLISTS** were developed to evaluate different assessment processes.
- PLO assessment reports were examined based on the PLO evaluation checklists.
- Program review process was examined based on PPR evaluation checklist.
- The PPR guidelines and templates were revised to align with MSCHE standards for accreditation and best practices.
- Feedback was collected from different administrative/assessment committees.



References

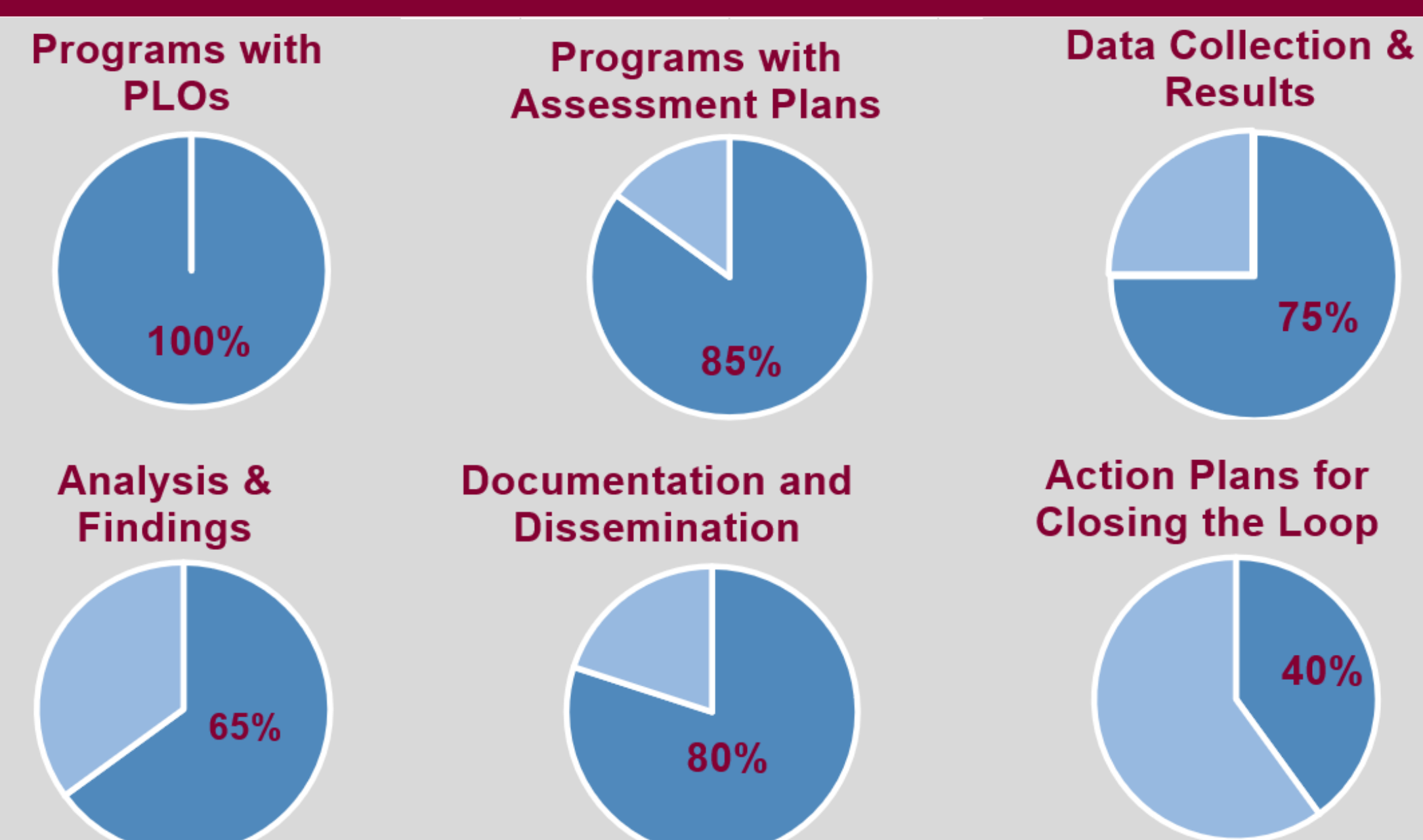
Guidelines & Templates



SCUP Article



Evaluation of PLO Assessment



Findings

- CLOSING OF THE LOOP** involves implementing changes based on assessment results with the expectation that these changes will result to improvements in student learning.
- Examples:** modifying pedagogical practices, course content, academic processes, and assessment measures.
- Identify **areas for improvement** and develop an **action plan** with estimated timeline, resources, and owners.
- Orientation workshops are offered regularly to all assessment committees and accreditation officers.

Contact Me
Dania Salem
ds23@aub.edu.lb